

Activity Sheet 3 (Side A)

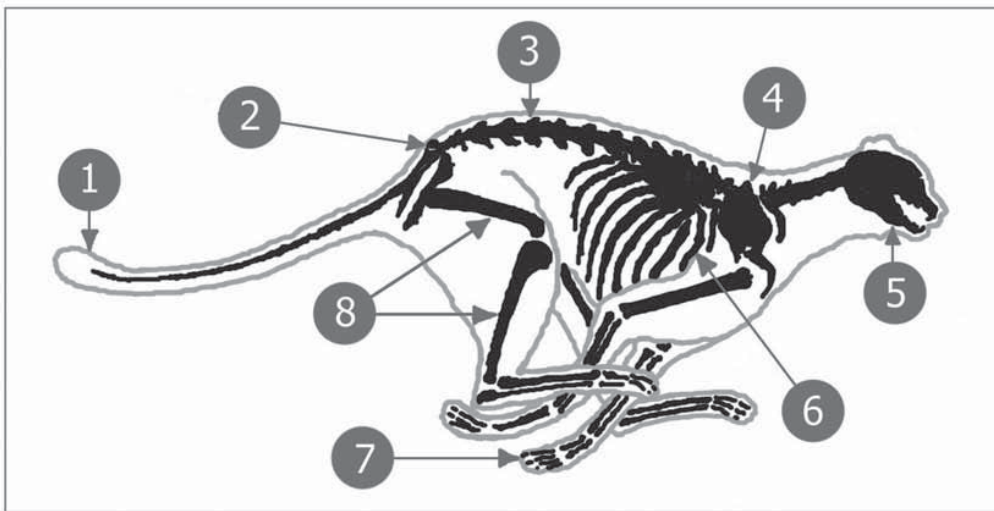
**PLEASE ASK YOUR TEACHER TO PHOTOCOPY THIS SHEET
SO YOU CAN WORK ON THIS ACTIVITY**

These activities are based upon what you have read about the anatomy and behaviour of the cheetah.

Student Name _____

1. CHEETAH ADAPTATIONS FOR SPEED

Look at the diagram and table below and write what each adaptation is for in the 'Function' column.



PART	FUNCTION
1 TAIL	
2 HIPS	
3 SPINE	
4 SHOULDER BLADES	
5 HEAD	
6 HEART & LUNGS	
7 CLAWS & PADS	
8 LEG BONES	



Activity Sheet 3 (Side B)

2. Leopard or cheetah?

Look at these pictures and write the correct name under each one.





3. Active in daytime or night time?

There are two words, used to describe animals that are **active in daytime** and **active at night time**. What are they?

_____ means 'active in daytime'.

_____ means 'active at night time'.

4. Cheetah cubs are born with a smoky-grey coat. What is the name used to describe the long hair on their shoulders and back?

5. Why do cubs have this coat?



Activity Sheet 3 (Side C)

PLEASE ASK YOUR TEACHER TO PHOTOCOPY THIS SHEET SO YOU CAN WORK ON THIS ACTIVITY

6. Plotting and Drawing a Line Graph.

The tables below show the growth rate of a young cheetah and a human child, but a much better way to show all this information is on a line graph.

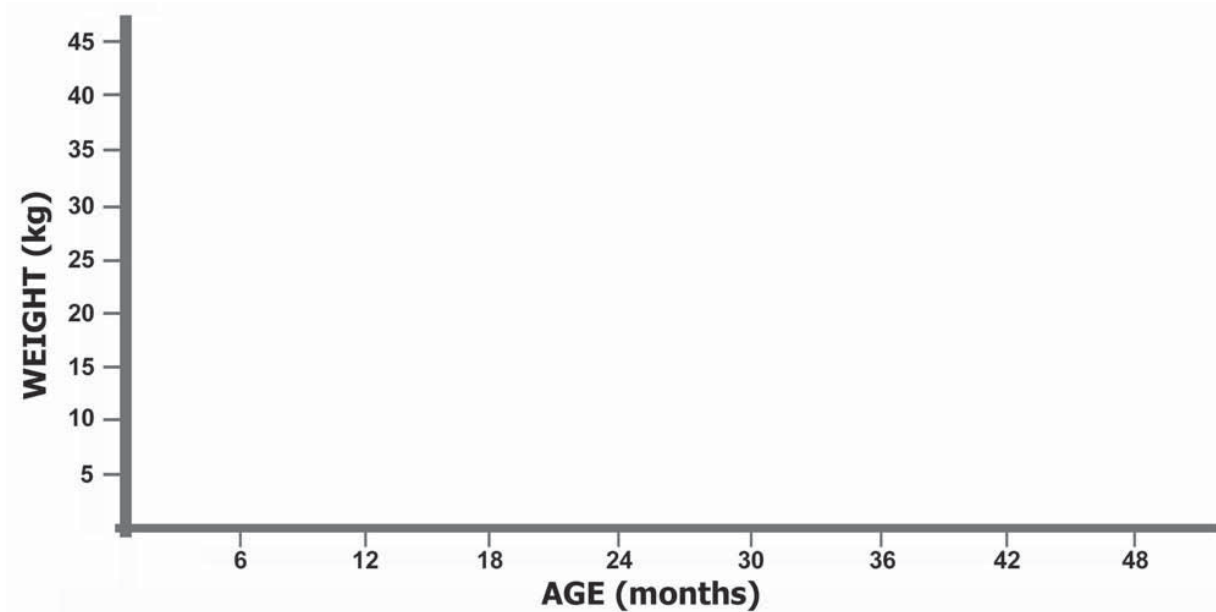
Using the information in the tables, mark the growth points on the graph. Use red dots for the cheetah cub and blue dots for the human child. Then, join the red dots together to make a red line. Do the same with the blue dots to make a blue line.

CHEETAH CUB

AGE	WEIGHT
Birth	0.3 kg
2 months	3.0 kg
4 months	7.0 kg
6 months	12.0 kg
12 months	25.0 kg
18 months	30.0 kg
24 months	35.0 kg
48 months (adult cat)	35 - 45 kg

CHILD

AGE	WEIGHT
Birth	3.5 kg
2 months	5.5 kg
4 months	6.5 kg
6 months	8.0 kg
12 months	10.0 kg
18 months	11.0 kg
24 months	12.0 kg
48 months	16.0 kg
8 years	26.0 kg
12 years	43.0 kg
Adult person	63.0+kg



Activity Sheet 3 (Side D)

7. Results from the Graph

What does the graph now tell you about the rate of growth of a cheetah cub?

8. Cheetah prey.

Of these three, which is **not** commonly preyed upon by the cheetah?



young kudu



zebra



warthog

Cheetahs do not usually prey upon _____.

9. Explain why, after catching their **prey**, cheetahs have to remain alert, be on the look-out and eat quickly?

